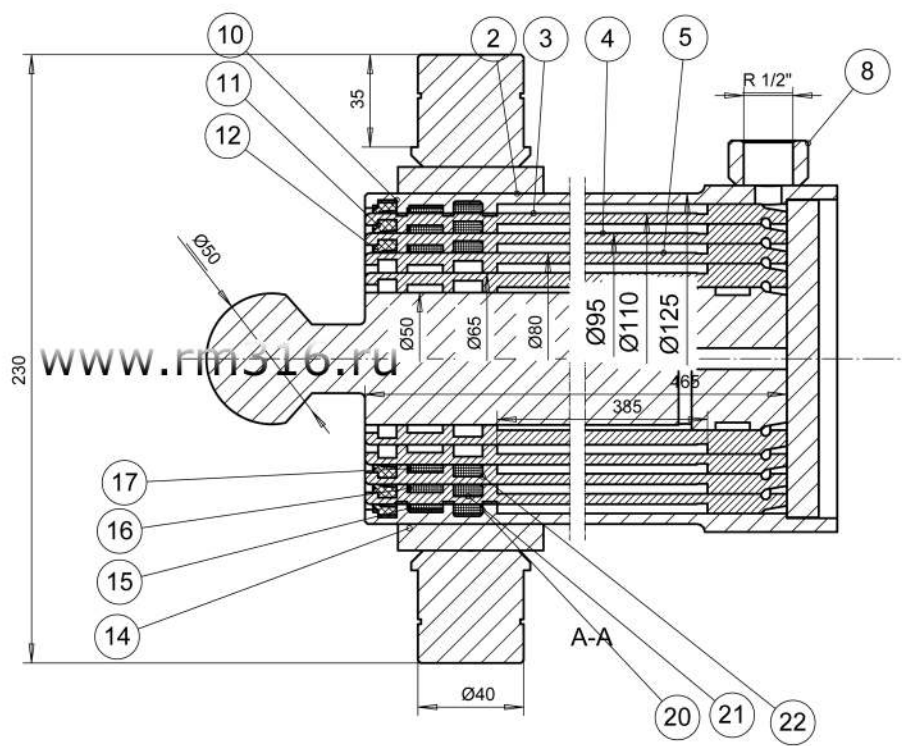


www.rm316.ru - МАГАЗИН ГИДРАВЛИКИ

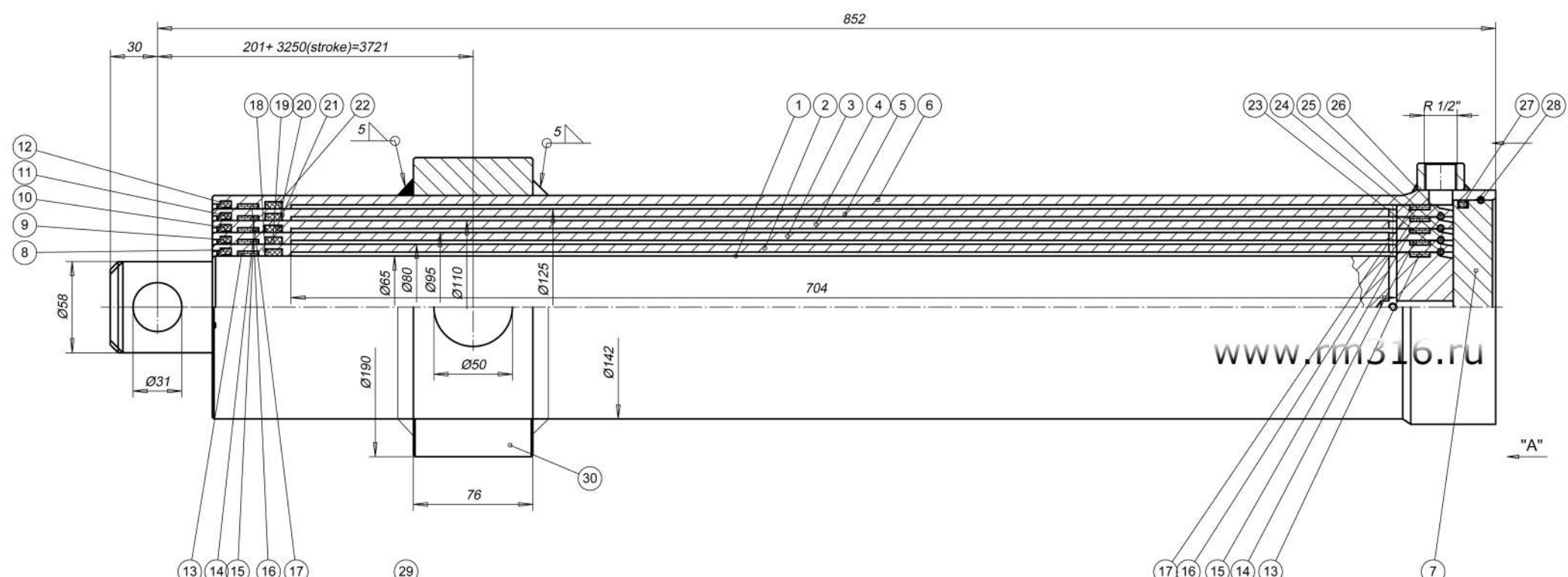


----	1	5153	KIPINPUTKI PV D65 KIINN PALLO	
----	1	5224D125	KIPINPUTKI PV D125 L=488 ALAK.	
----	1	5658	NY-NIVEL	PV-KIPPI
----	1	41100004NA	POHJALEVY NA	
22	1	6018		
21	1	6019		
20	1	6020		
17	1	6024	VARR.OHJ.RENGAS I/PWR 80-86-13	
16	1	6025	VARR.OHJ.RENGAS I/PWR 95-101-13	
15	1	6026	VARR.OHJ.RENGAS I/PWR 110-116-13	
12	1	6021		
11	1	6022		
10	1	6023		
8	1	62914	MUHVI R1/2 ,L=17,D=30 (42200012.c. 03)	
5	1	5220D80	KIPINPUTKI PV D 80 L=465 lii	
4	1	5220D095	KIPINPUTKI PV D 95 L=465 lii	
3	1	5220D110	KIPINPUTKI PV D110 LIKK. L=465	
Osa	Kpl	piir.N:o/koodi	Nimi	Nimitys2
200-	-0.5	+0.6	+0.6+-2.0	
100-200	-0.3	+0.5	+0.5+-1.5	
50-100	-0.2	+0.4	+0.4+-1.0	
1-50	-0.1	+0.2	+0.2+-0.5	
Nimel-lis-lis-mitta	ulko	sisä	muu	Raaka-pinta
Toler. ellei merkitty			lask. massa	35.9 kg
			Ryhmä	Yläk PERÄVKIPPI 8 t 1925/100
			Nimitys	5002NY6
			Suhde	1:2
			Pvm	2013-10-02
			Piirt.	JA
			Tark	
			versio	

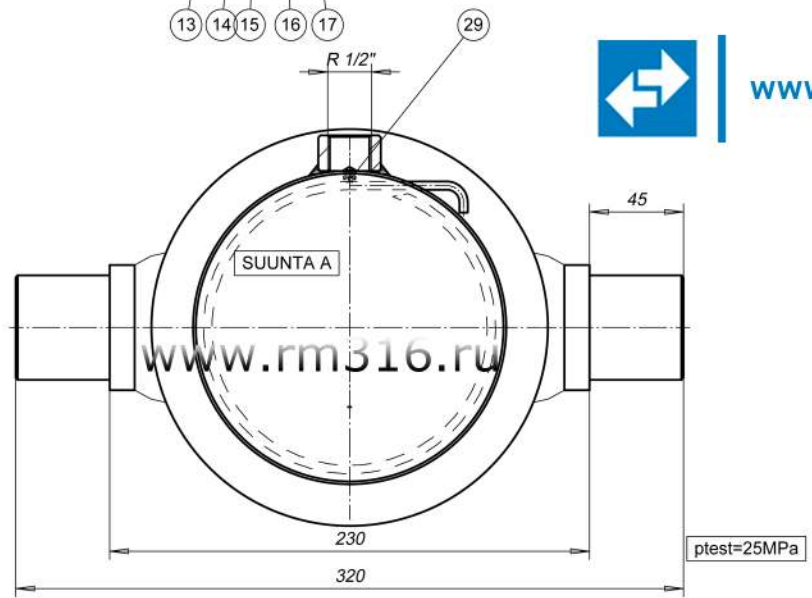


NURMI AUTO OY
 www.rm316.ru

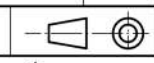


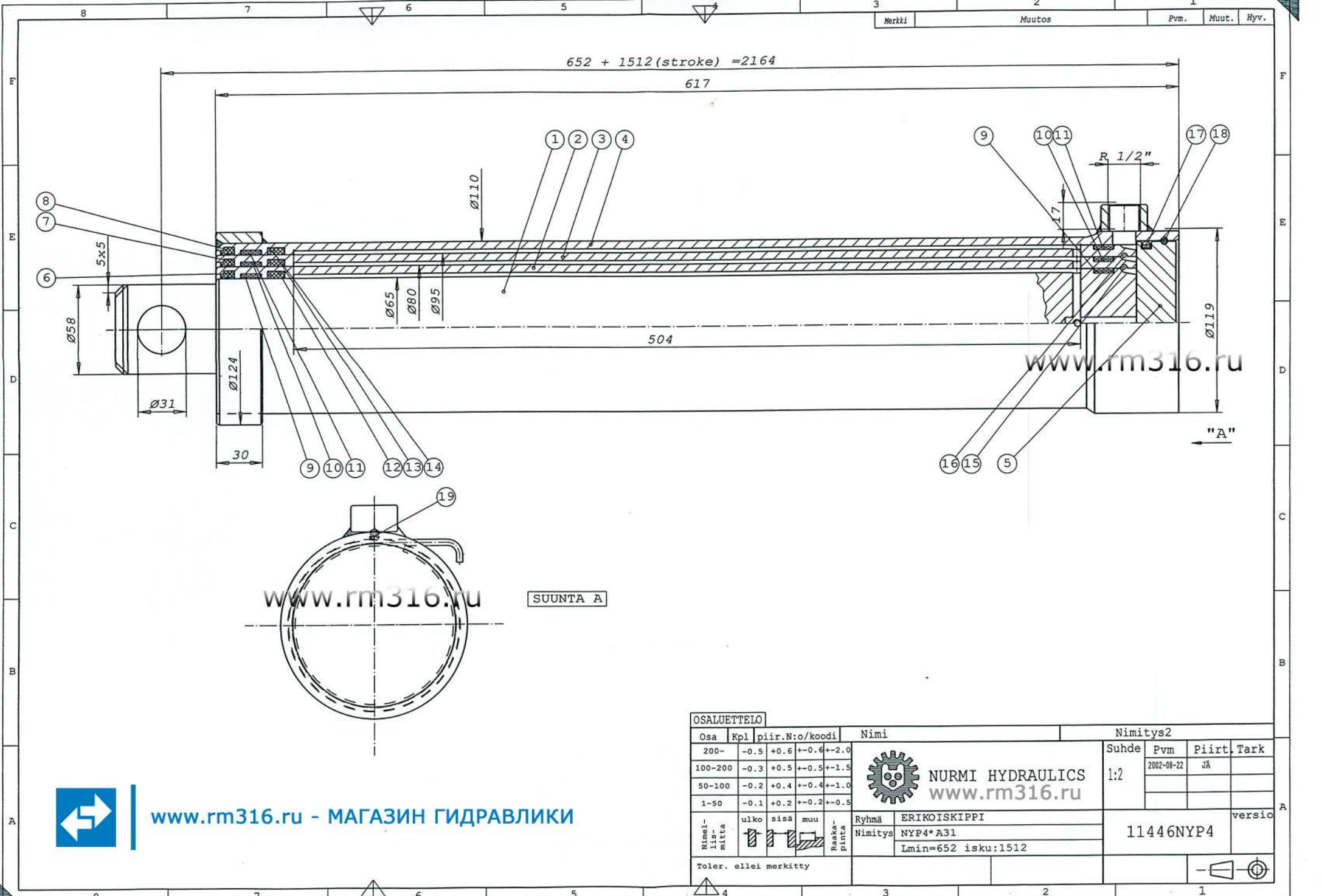


www.rm316.ru - МАГАЗИН ГИДРАВЛИКИ



OSALUETTELO					Nimi		Nimitys2			
Osa	Kpl	piir.N/alkoodi			Nimi		Suhde	Pvm	Piirt.	Tark
200-	-0.5	+0.6	+0.6	+2.0	 NURMI HYDRAULICS www.rm316.ru		12.5	2002-08-22	JA	
100-200	-0.3	+0.5	+0.5	+1.5						
50-100	-0.2	+0.4	+0.4	+1.0						
1-50	-0.1	+0.2	+0.2	+0.5						
Nimi: lis- mitta	ulko	sisä	muu	Reak- pinta	Ryhmä	ERIKOISKIPPI	11446NYS6			
	Nimitys					NYS6*A31				
Toler: ellei merkitty					Lmin=852 Isku:3250					





www.rm316.ru

www.rm316.ru SUUNTA A

OSALUETTELO					Nimi		Nimitys2			
Osa	Kpl	piir.N:o/koodi					Suhde	Pvm	Piirt.	Tark
200-	-0.5	+0.6	+0.6	+2.0	 NURMI HYDRAULICS www.rm316.ru		1:2	2002-08-22	JK	
100-200	-0.3	+0.5	+0.5	+1.5						
50-100	-0.2	+0.4	+0.4	+1.0						
1-50	-0.1	+0.2	+0.2	+0.5						
Nimel- lis- mitta	ulko	sisä	muu	Raaka- pinta	Ryhmä	ERIKOISKIPPI	11446NYP4			
					Nimitys	NYP4*A31				
Toler. ellei merkitty					Lmin=652 isku:1512					

 www.rm316.ru - МАГАЗИН ГИДРАВЛИКИ

TELESCOPIC CYLINDERS



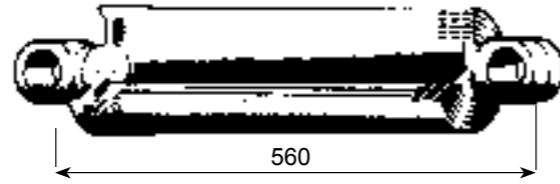
TRAILER TIPPER GEARS

UPPER END FASTENING

- For 3 way tipping equipment applications
- For single cylinder tipping



LOWER END FASTENING



- Mounting with free bearing available
- Chrome plating as an option
- Customer applications possible

- Made by the largest Nordic manufacturer in this field

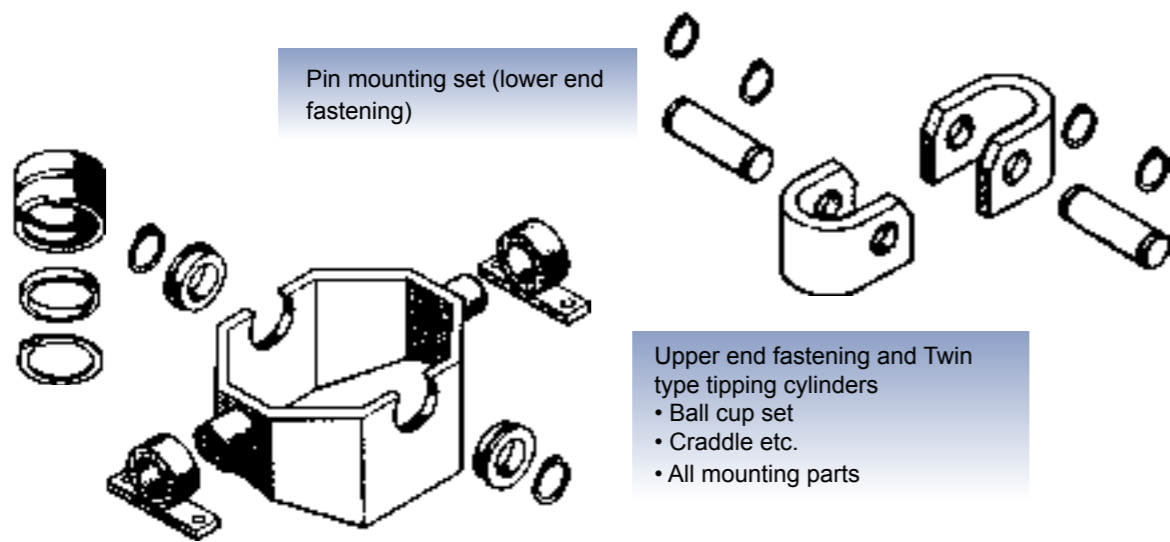
- Full spare part service

- All necessary installation fittings supplied

- Maximum operating pressure 210 bar

- 1 All cylinders are interchangeable, as installation length is identical
- 2 Made of high quality cold-rolled tube
- 3 The latest high quality seals used
- 4 High quality guides prevent seizure

INSTALLATION FITTINGS FOR TRAILER TIPPER GEARS



Pin mounting set (lower end fastening)

Upper end fastening and Twin type tipping cylinders

- Ball cup set
- Cradle etc.
- All mounting parts



TRAILER TIPPER GEAR RECOMMENDATIONS

Lower end fastening type	Upper end fastening type	Jacket Ø	Extending selection							Stroke length (mm)	Oil volume (l)	Max. platform length	Power at 160 bar	Dimens. L ¹ /mm	Dimens. L ² /mm.
			142	125	110	95	80	65	50						
5000/NAL3	5002/NYL3	95								770	3,2	3,5 m	3 tn	800	1300
5000NAL4	5002/NYL4	95								1155	4,0	4,0 m	4 tn	1200	1700
5000/NAP3	5002/NYP3	110								770	4,7	3,5 m	5 tn	800	1300
5000/NAP4	5002/NYP4	110								1155	5,9	4,0 m	6 tn	1200	1700
5000/NAP5	5002/NYP5	110								1540	6,7	4,5 m	6 tn	1600	2100
5000/NA3	5002/NY3	125								770	6,4	3,5 m	6 tn	800	1300
5000/NA4	5002/NY4	125								1155	8,3	4,0 m	7 tn	1200	1700
5000/NA5	5002/NY5	125								1540	9,5	4,8 m	8 tn	1600	2100
5000/NA6	5002/NY6	125								1925	10,3	5,2 m	8 tn	2000	2500
5000/NAS4	5002/NYS4	142								1155	11,1	4,2 m	9 tn	1200	1700
5000/NAS5	5002/NYS5	142								1540	13,0	4,8 m	9 tn	1600	2100
5000/NAS6	5002/NYS6	142								1925	14,2	5,5 m	10 tn	2000	2500
5000/NAS7	5002/NYS7	142								2310	15,0	6,0 m	11 tn	2400	2800
5001/NAT6	5003/NYT6	165								1925	17,3	5,5 m	11 tn	2000	2500
5001/NAT7	5003/NYT7	165								2310	19,2	6,0 m	12 tn	2400	2800
5001/NAT8	5003/NYT8	165								2695	21,3	7,0 m	12 tn	2800	3100
TWIN TIPPING CYLINDERS															
	5004/KYL4	95								1155	8,0	4,0 m	2 x 4 t	1200	
	5004/KYP4	110								1155	11,8	4,0 m	2 x 5 t	1200	
	5004/KYP5	110								1540	13,4	4,5 m	2 x 6 t	1600	
	5004/KY6	125								1925	20,6	5,2 m	2 x 7 t	2000	
	5004/KYS7	142								2310	30,0	6,0 m	2 x 8 t	2400	

VEHICLE TIPPER GEARS

FRONT GEAR TIPPER



Including 4 different sizes. Nurmi's Front Gear Tipper is suitable also for long chassis versions. Lower mounting is with spherical bearing, which tolerates also some movements sideways. Complete delivery acc. to picture.

TWIN RAM TIPPER GEAR



Includes twin rams and all fittings needed for fastening. System is designed for heavy duty use and it provides excellent stability during tipping. Lower pressures can be used compared to single rams. Both rams have own mounting with robust bearings. This creates light and open construction.

SINGLE RAM TIPPER GEAR



With cast steel body, which makes optimized and light weight construction. Delivery includes also all fastening fittings.

All Nurmi Vehicle Tipper Gears have hard chromated ram tubes.

DOUBLE ACTING TELESCOPIC CYLINDERS



Using Double Acting Telescopic Cylinder makes it possible to use long strokes and still to keep extremely short minimum length. Nurmi has manufactured double acting telescopes over 30 years and we have applications for all possible purposes.



Nurmi Hydraulics Oy is one of Europe's leading manufacturers of industrial, marine and mobile hydraulics as well as one of the biggest super structure producers for truck industry.

Our delivery programme includes hydraulic cylinders for demanding special fields of industry from single components to serial production.

The quality is achieved by 160 professional employees.

Our operation is based on ISO 9001 and ISO 14001 certified quality system.



NURMI HYDRAULICS OY
Pusulantie 1080, FIN-03810 Ikkala, Finland
Tel: +358 (0) 9 2242 050, fax: +358 (0) 9 2262 486
E-mail: nurmi@nurmi.fi www.nurmi.fi
VAT Code FI 0130761-0

